



# RS232KON / TOS-VF-RS232C

RS232C-interface for TOSHIBA – inverters  
VF-nC1, VF-S11, VF-A7 and VF-P7,

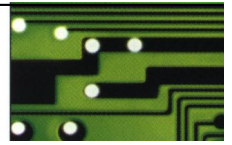


RS232C - interface

Incl. Cable



**EUGEN SCHMIDT UND CO**  
**ANTRIEBSTECHNIK**



# TOS-VF-RS232C

## RS232C-interface for TOSHIBA – inverters

VF-S7, VF-S9 and VF-A7

### Technical data

The TOSHIBA –inverters are standardly provided with a RS422-communication – port. The interface-modul TOS-VF-RS232C converts the RS422-signal to RS232C-signal. Using this interface a communication between inverter and devices with RS232C-communication-port (IPC, operator panel) can be set up. Through the comfortable windows-software and the TOS-VF-RS232C it is possible to store all parameters of the TOSHIBA-inverters on the PC.

Model	TOS-VF-RS232C
Service environment / ambient	Indoor lower than 1000m above sea level, not subject to directly sunlight, corrosive or explosive gas, vapor, dust, chips, cutting oil, grinding agent etc.
Operating temperature	-10°C ... +50°C
Storage temperature	-25°C ... +65°C
Humidity	20% ... 90% (no condensation allowed)
Vibration	5,9 m / s <sup>2</sup> or less
Cooling system	Self cooling
Cable lenght	Inverter-side 45cm, PC-side 195 cm
Dimmensions	(40 x 130 x 24) mm (W x H x D)
Connection PC-side	9 pin Sub-D
Connection inverter-side	8-pin modular type ("ISDN-plug")
Weight	200 g



**EUGEN SCHMIDT UND CO**  
ANTRIEBSTECHNIK