

Piros S for non contact temperature measurement for non metal materials optimised with PG11 stainless steel housing and air connection.

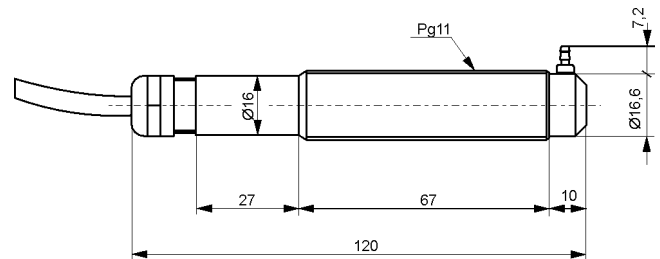
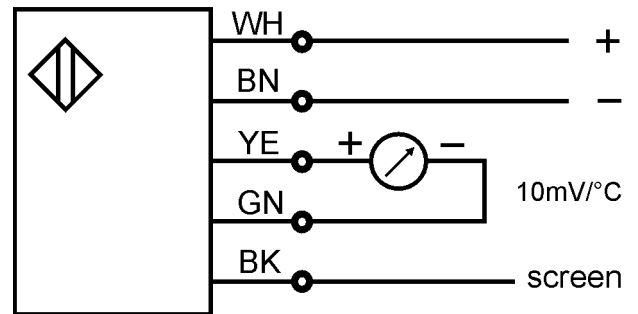
Analog
10 mV/°C



Technical Data

Type	OMS 500.1U L
Art.-No.	6905A
Response temperature	100 - 500 °C
Spectral Range	8 - 14 µm
Output	10 mV/°C
Measuring failure	1,5 % min. +/-2,5 K
Response time t90%	0,3 sec.
Distance ratio	5:1
Detected surface at 0,3 m	Ø 60 mm
Emissivity fixed	95 %
Load impedance	50 KOhm
Supply voltage stabilized	24 V DC +/- 25 %
Power consumption	< 7 mA
Ambient temperature	0 to +70 °C
Protection class	IP 65
Connection	1 m cable (up to 100 °C)
Supply voltage display	no
Housing material	stainless steel
Accessories	Art.-No.
(not included in the scope of supply)	
90° deflection mirror DAM 202	6914B
Cooling jacket DAM 201 up to 270 °C	6914A
Adjustable mounting bracket DAM 203	6914C

Diagram of Connections



Piros S for non contact temperature measurement for non metal materials optimised with PG11 stainless steel housing and air connection.

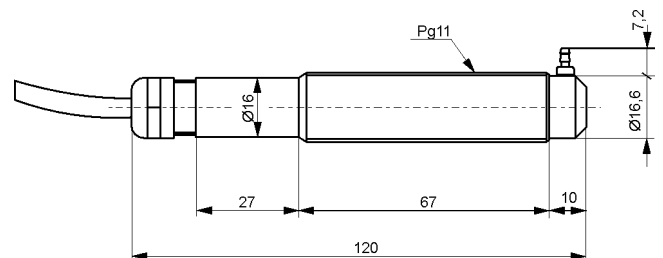
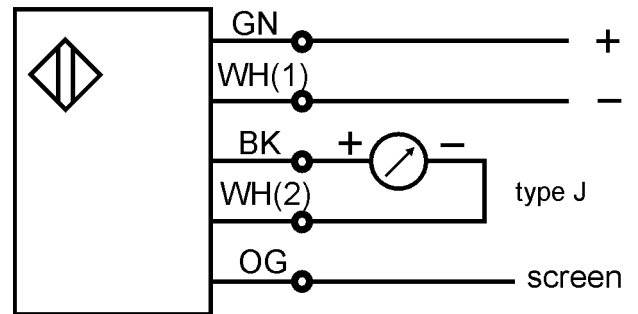
Analog
Type J
Contact Potential



Technical Data

Type	OMS 500.1J L
Art.-No.	6906A
Response temperature	100 - 500 °C
Spectral Range	8 - 14 µm
Output	Contact potential type J
Measuring failure	1,5 % min. +/-2,5 K
Response time t90%	0,3 sec.
Distance ratio	5:1
Detected surface at 0,3 m	Ø 60 mm
Emissivity fixed	95 %
Load impedance	50 KOhm
Supply voltage stabilized	24 V DC +/- 25 %
Power consumption	< 7 mA
Ambient temperature	0 to +70 °C
Protection class	IP 65
Connection	1 m cable (up to 100 °C)
Supply voltage display	no
Housing material	stainless steel
Accessories (not included in the scope of supply)	Art.-No.
90° deflection mirror DAM 202	6914B
Cooling jacket DAM 201 up to 270 °C	6914A
Adjustable mounting bracket DAM 203	6914C

Diagram of Connections



Piros S for non contact temperature measurement for non metal materials optimised with PG11 stainless steel housing and air connection.

Analog
Type K
Contact Potential



Technical Data

Type	OMS 650.1K L
Art.-No.	6907A
Response temperature	150 - 650 °C
Spectral Range	8 - 14 µm
Output	Contact potential type K
Measuring failure	1,5 % min. +/-2,5 K
Response time t90%	0,3 sec.
Distance ratio	5:1
Detected surface at 0,3 m	Ø 60 mm
Emissivity fixed	95 %
Load impedance	50 KOhm
Supply voltage stabilized	24 V DC +/- 25 %
Power consumption	< 7 mA
Ambient temperature	0 to +70 °C
Protection class	IP 65
Connection	1 m cable (up to 100 °C)
Supply voltage display	no
Housing material	stainless steel
Accessories (not included in the scope of supply)	Art.-No.
90° deflection mirror DAM 202	6914B
Cooling jacket DAM 201 up to 270 °C	6914A
Adjustable mounting bracket DAM 203	6914C

Diagram of Connections

