

Piros S for non contact temperature measurement. Having adjustable emissivity, response time and measuring range the sensor can be flexible used for many applications

analog
4 - 20 mA



Technical Data

Type	OKS 1 GA13.14
Art.-No.	6901A
Response temperature	300 - 1300 °C
Spectral Range	1,45 ... 1,8 µm
Output	4 - 20 mA
Measuring failure	0,5 %
Response time t90% min / max.	20 msec. / 10 sec.
Detected surface at 0,6 m	Ø 6 mm
Emissivity	5...100 %
Integrated laser pilotlight*	yes (5 - 30 V DC)
Integrated MAX data storage	yes
Service Interface	yes
Load impedance	< 700 Ohm (24 V)
Supply voltage stabilized	24 V DC +/- 25 %
Ripple voltage	< 50 mV
Power consumption	≤ 1,5 VA
Power consumption pilotlight	≤ 35 mA
Ambient temperature	0 to +70 °C
Protection class	IP 65
Connection	2 m cable
Supply voltage display	LED
Housing material	stainless steel
Accessories	Art.-No.
(not included in the scope of supply)	
PC-adapter cable + software DAK 301	6913A
Cooling jacket DAK 302	6913B
Mounting clamp DAK 305	6913E

*switchable if needed

The emissivity, the response time as well as the measuring subrange may be adjusted with optional PC service software and PC-adapter cable.

Distance (a) / Measuring point diameter

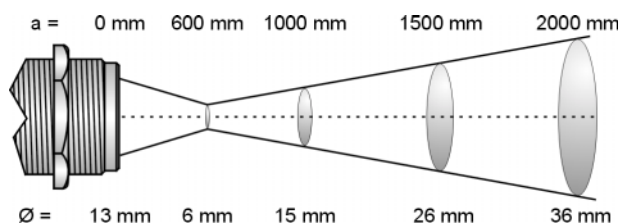
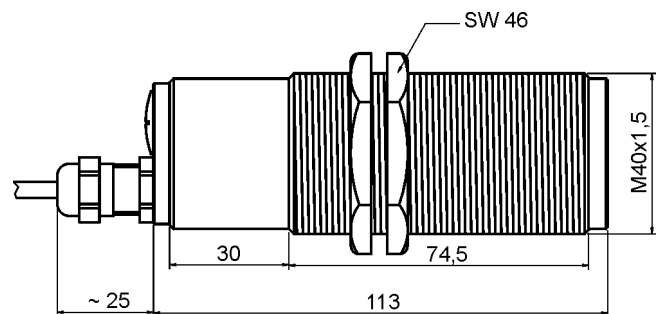
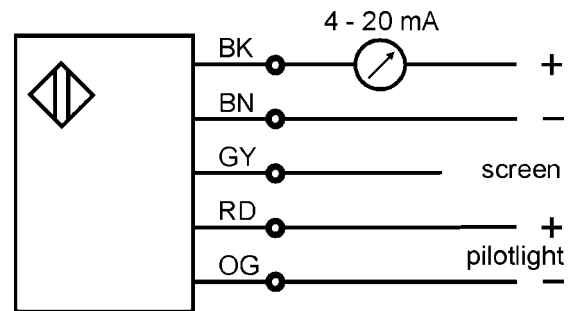


Diagram of Connections



Piros S for non contact temperature measurement. Having adjustable emissivity, response time and measuring range the sensor can be flexible used for many applications

analog
4 - 20 mA



Technical Data

Type	OKS 2 GA13.14
Art.-No.	6901B
Response temperature	300 - 1300 °C
Spectral Range	1,45 ... 1,8 µm
Output	4 - 20 mA
Measuring failure	0,5 %
Response time t90% min / max.	20 msec. / 10 sec.
Detected surface at 1 m	Ø 9 mm
Emissivity	5...100 %
Integrated laser pilotlight*	yes (5 - 30 V DC)
Integrated MAX data storage	yes
Service Interface	yes
Load impedance	< 700 Ohm (24 V)
Supply voltage stabilized	24 V DC +/- 25 %
Ripple voltage	< 50 mV
Power consumption	≤ 1,5 VA
Power consumption pilotlight	≤ 35 mA
Ambient temperature	0 to +70 °C
Protection class	IP 65
Connection	2 m cable
Supply voltage display	LED
Housing material	stainless steel
Accessories	Art.-No.
(not included in the scope of supply)	
PC-adapter cable + software DAK 301	6913A
Cooling jacket DAK 302	6913B
Mounting clamp DAK 305	6913E

*switchable if needed

The emissivity, the response time as well as the measuring subrange may be adjusted with optional PC service software and PC-adapter cable.

Distance (a) / Measuring point diameter

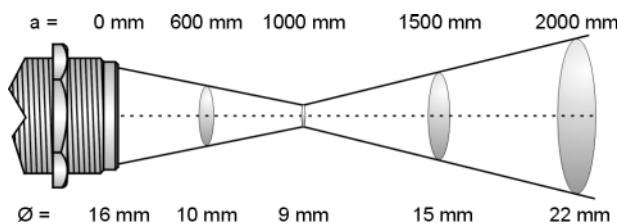
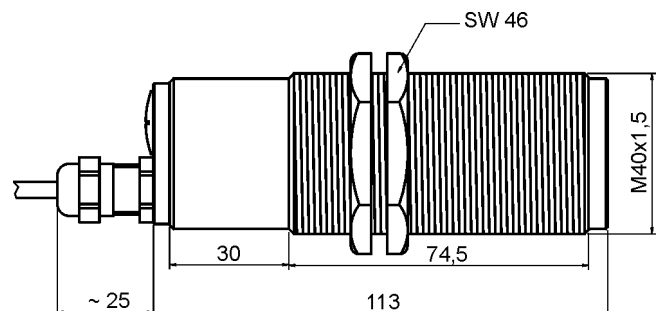
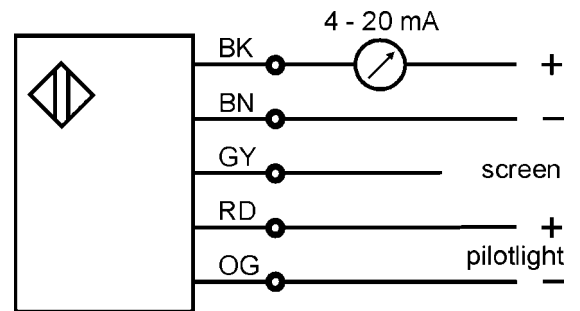


Diagram of Connections



Piros S for non contact temperature measurement. Having adjustable emissivity, response time and measuring range the sensor can be flexible used for many applications

analog
4 - 20 mA



Technical Data

Type	OKS 3 GA13.14
Art.-No.	6901C
Response temperature	300 - 1300 °C
Spectral Range	1,45 ... 1,8 µm
Output	4 - 20 mA
Measuring failure	0,5 %
Response time t90% min / max.	20 msec. / 10 sec.
Detected surface at 1,5 m	Ø 11 mm
Emissivity	5...100 %
Integrated laser pilotlight*	yes (5 - 30 V DC)
Integrated MAX data storage	yes
Service Interface	yes
Load impedance	< 700 Ohm (24 V)
Supply voltage stabilized	24 V DC +/- 25 %
Ripple voltage	< 50 mV
Power consumption	≤ 1,5 VA
Power consumption pilotlight	≤ 35 mA
Ambient temperature	0 to +70 °C
Protection class	IP 65
Connection	2 m cable
Supply voltage display	LED
Housing material	stainless steel
Accessories	Art.-No.
(not included in the scope of supply)	
PC-adapter cable + software DAK 301	6913A
Cooling jacket DAK 302	6913B
Mounting clamp DAK 305	6913E

*switchable if needed

The emissivity, the response time as well as the measuring subrange may be adjusted with optional PC service software and PC-adapter cable.

Distance (a) / Measuring point diameter

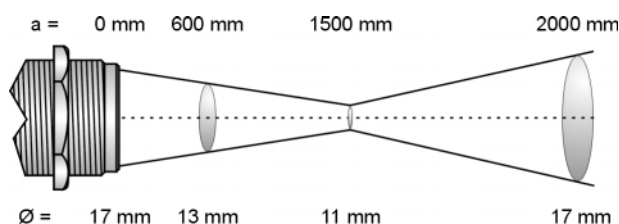


Diagram of Connections

