

Capacitive proximity switch with relay output and programmable time relay.

The sensor is adjusted to sense with target present. When a target isn't sensed the internal delay timer starts and at the end of the time period activates the relay.

Technical Data

Type	KKH 020.0RT
Art.-No.	1052A
Rated operating distance (Sn)	20 mm
Output (active after delay time)	Relay changeover contact
Delay time adjustable (active at clear sensor)	1s – 10 min (factory setting 2 min.)
Operating distance adjustable	yes
Target steel St37 or water	60 x 60 mm
Location at metal	not embedded
Supply voltage (UB)	20 - 260 V AC/DC
Power frequency	40 - 440 Hz
Ripple voltage	max. 15 % (DC)
Relay contact load max.	230 V AC max. 125 VA / 60 W
Test voltage relay open contacts	1000 V
Test voltage relay coil /contacts	1500 V
Current absorbed	< 1 W
Operating frequency (f)	1 Hz
Switching hysteresis (H)	1 - 15 %
Ambient temperature	-20 ... +70 °C
Protection class	IP 65
Connection	1,5 m cable
Function display	LED
Housing material	Plastic PBT

When the sensor is sensing product the relay is inactive and contacts 1 and 4 are normally closed. The timer starts immediately the sensor is clear (LED flashes) after the time delay period the relay activates and contacts 1 and 3 close.

Adjusting the delay time

The delay time freely adjusts between 1 seconds and 2 minutes using the set time button.

Press the button for 2 seconds, wait until the LED flashes.
(begin of delay period after releasing the button)
After the preferred time period (max 10 min) press the button again
(end of delay period). The time between the first and the second operation of the button is stored and is the delay time for activating the relay.

For factory setting (delay period 2 min) press the button for 5 seconds, and wait until the LED gives no light.

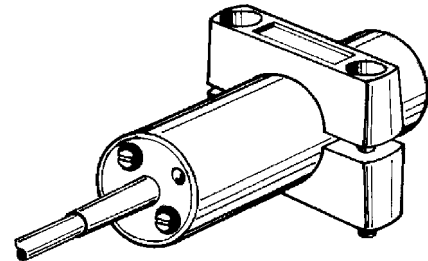
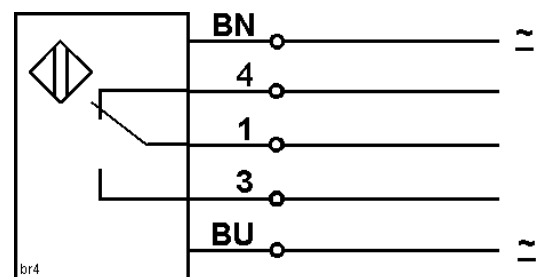


Diagram of Connections



Relay output at target sensed

