

## Suppressor for valves

with LED  
with suppressor and LED

### VBS

form A  
pin spacing 18 mm  
EN 175301-803 (ISO 4400)

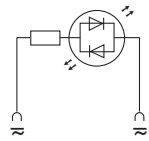


### LBS

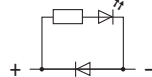
industrial standard  
pin spacing 11 mm



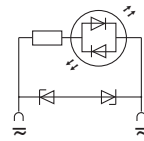
### Circuit diagram



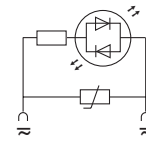
LED



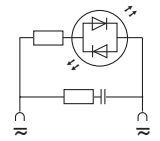
LED+Diode



LED+Z-Diode



LED+VDR



LED+RC

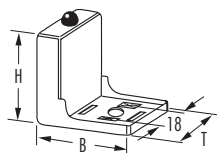
### Ordering data

Voltage		Suppression	Art.-No.	Art.-No.	Switch off-delay time [ms]	Switch off-voltage peak [V]	Valve hold-on rating [W/VA]
<sup>3)</sup> 24 V DC	LED + Diode		<sup>1)</sup> <b>3124021</b>	<b>3124221</b>	200	1	50
	24 V AC/DC	LED	<sup>1)</sup> <b>3124015</b>	<b>3124215</b>	–	–	50
		LED + Z-Diode	<sup>1)</sup> <b>3124033</b>	<b>3124233</b>	20	55	100
		LED + VDR	<sup>1)</sup> <b>3124048</b>	<b>3124248</b>	15	45	50
		LED + RC	<b>3124068</b>		20	105	10
48 V AC/DC	LED + RC				20	70	20
	LED		<sup>1)</sup> <b>3124017</b>		–	–	50
	LED + VDR		<sup>1)</sup> <b>3124052</b>		10	75	100
110 V AC/DC	LED + RC		<sup>2)</sup> <b>3124071</b>		20	90	30
	LED		<b>3124018</b>		–	–	50
	LED + VDR		<b>3124046</b>		10	235	100
	LED + RC		<b>3124070</b>		20	250	10
230 V AC/DC	LED + RC		<sup>2)</sup> <b>3124072</b>		20	250	25
	LED		<b>3124016</b>	<b>3124216</b>	–	–	50
	LED + VDR		<b>3124049</b>	<b>3124249</b>	15	360	100
	LED + RC		<b>3124063</b>	<b>3124263</b>	20	300	10
	LED + RC		<sup>2)</sup> <b>3124064</b>		20	300	25

### Technical data

Supply indicator	yellow LED
Contact material	silvered bronze
Protection	IP65 when fully mounted
Material	black polyamide, flame retardant, temp. resist. up to 130 °C
Temperature range	-20...+60 °C

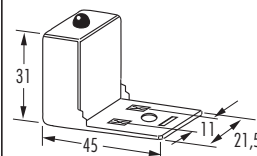
### Dimension drawing



Housing H x B x T: 37 x 45 x 30 mm

<sup>1)</sup> Housing H x B x T: 37 x 39 x 30 mm

<sup>2)</sup> Housing H x B x T: 37 x 53 x 33 mm



Note PIN arrangement (PE at cable outlet of connector)

180° version on request

### Notes

Do not use plug gasket when fitting adapter. Other LED colors on request.  
For double valves the VA 2 series is suitable (please inquire). <sup>3)</sup> Polarity dependent

## Suppressor for valves

with LED  
with suppressor and LED

### PBS

industrial standard  
pin spacing 11 mm

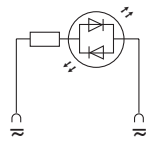


### DAB

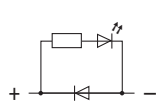
form B  
pin spacing 10 mm  
EN 175301-803 (ISO 6952)



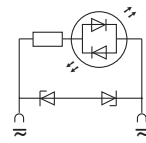
### Circuit diagram



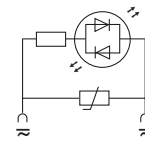
LED



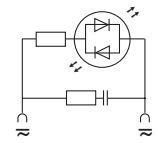
LED+Diode



LED+Z-Diode



LED+VDR



LED+RC

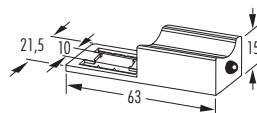
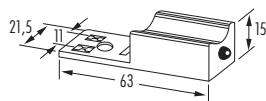
### Ordering data

Voltage		Suppression	Art.-No.	Art.-No.	Switch off delay time [ms]	Switch off voltage peak [V]	Valve hold-on rating [W/VA]
24 V DC	LED + Diode		<b>3124121</b>	<b>3124871</b>	200	1	50
	LED		<b>3124115</b>	<b>3124875</b>	—	—	50
	LED + Z-Diode		<b>3124133</b>	<b>3124873</b>	20	55	100
	LED + VDR		<b>3124148</b>		15	45	50
	LED + RC		<b>3124169</b>		20	70	20
110 V AC/DC	LED + VDR		<b>3124146</b>		10	235	100
	LED + RC		<b>3124170</b>		20	250	10
230 V AC/DC	LED		<b>3124116</b>		—	—	50
	LED + VDR		<b>3124149</b>		15	360	100
	LED + RC		<b>3124163</b>		20	300	10

### Technical data

Supply indicator	yellow LED
Contact material	silvered bronze
Protection	IP65 when fully mounted
Material	black polyamide, flame retardant, temp. resist. up to 130 °C
Temperature range	-20...+60 °C

### Dimension drawing



Note PIN arrangement (PE at cable outlet of connector) 180° version on request.

Suitable for 0 and 180° installation

### Notes

Do not use plug gasket when fitting adapter. Other LED colors on request.  
RT-angle housing version with 10 mm pin spacing (DAR/DARU), on request. <sup>1)</sup> Polarity dependent

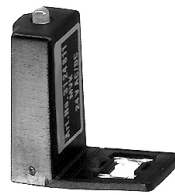
## Suppressor for valves

with LED  
with suppressor and LED

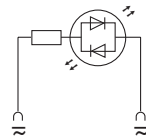
**MVT**  
industrial standard  
pin spacing 9.4 mm



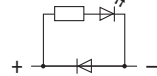
**MVK**  
form C  
pin spacing 8.0 mm  
EN 175301-803 (ISO 6952)



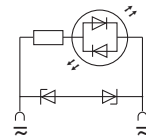
### Circuit diagram



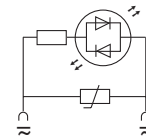
LED



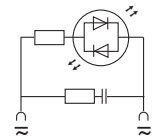
LED+Diode



LED+Z-Diode



LED+VDR



LED+RC

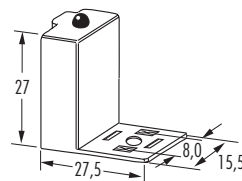
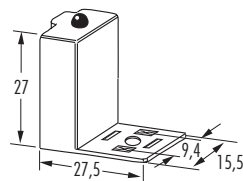
### Ordering data

		Art.-No.	Art.-No.	Switch off delay time [ms]	Switch off voltage peak [V]	Valve hold-on rating [W/VA]
Voltage	Suppression					
	24 V AC/DC	LED	<b>3124815</b>	<b>3124811</b>	–	50
		LED + Z-Diode	<b>3124832</b>	<b>3124833</b>	20	100
48 V AC/DC	LED + Z-Diode		<b>3124835</b>	20	75	100

### Technical data

Supply indicator	yellow LED
Contact material	silvered bronze
Protection	IP65 when fully mounted
Material	black polyamide, flame retardant, temp. resist. up to 130 °C
Temperature range	-20...+60 °C

### Dimension drawing



### Notes

Do not use plug gasket when fitting adapter. Other LED colors on request.  
<sup>1)</sup> Polarity dependent