

Distribution box for sensors and actuators

- with pre-wired cable
- suitable for drag chains,
halogen free
- unshielded or shielded
- for digital or analog
signals

MVP12 Metal

4-way, 8-way
with pre-wired cable



Approvals: 

Contact layout

General:

Contact 1: (+)
Contact 2: (N/C)/(S2)
Contact 3: (–)
Contact 4: (N/O)/(S1)
Contact 5: (PE)
Shielding: M12 threaded sleeve

M12 female
5-pole



with LED
for digital PNP-signals 24 V DC

without LED
for analog signals or nominal voltage up to 125 V AC/DC

Distribution box 4-way		Art.-No.	Art.-No.
connection cable, unshielded	cable length		
PUR (UL/CSA-listed)	3.0 m	27471	27476
8 x 0.5/3 x 1 mm ²	5.0 m	27472	27477
	10.0 m	27473	27478
	15.0 m	27474	27479
Distribution box 8-way		Art.-No.	Art.-No.
connection cable, unshielded	cable length		
PUR (UL/CSA-listed)	3.0 m	27491	27496
16 x 0.5/3 x 1 mm ²	5.0 m	27492	27497
	10.0 m	27493	27498
	15.0 m	27494	27499
with potential separation	3.0 m	27521	
left/right page ¹⁾	5.0 m	27522	
PUR (UL/CSA-listed)	10.0 m	27523	
16 x 0.34/5 x 0.75 mm ²	15.0 m	27524	
Distribution box 4-way shielded		Art.-No.	Art.-No.
connection cable	cable length		
PUR (UL/CSA-listed)	3.0 m	27481	27486
8 x 0.34/3 x 0.75 mm ²	5.0 m	27482	27487
	10.0 m	27483	27488
	15.0 m	27484	27489
Distribution box 8-way shielded		Art.-No.	Art.-No.
connection cable	cable length		
PUR (UL/CSA-listed)	3.0 m	27511	27516
16 x 0.34/3 x 0.75 mm ²	5.0 m	27512	27517
	10.0 m	27513	27518
	15.0 m	27514	27519

Accessories

page 1.12.2

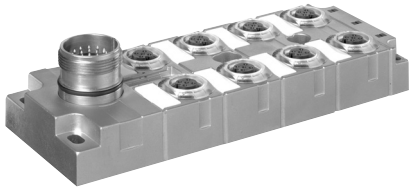
Notes

¹⁾ Sockets 1, 3, 5, 7 or 2, 4, 6, 8 may vary.
Other versions on request. Technical data in chapter 1.3.

Distribution box
for sensors and actuators

- with 19-pole
plug connector M23
- suitable for unshielded or
shielded cables
- for digital or analog
signals

MVP12 Metal
4-way, 8-way
with plug connector M23

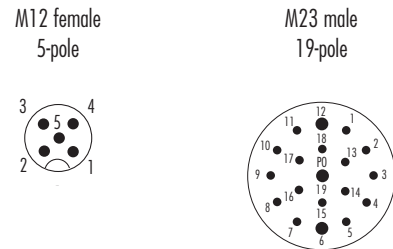


Approvals: 

Contact layout

General:

Contact 1: (+)
Contact 2: (N/C)/(S2)
Contact 3: (-)
Contact 4: (N/O)/(S1)
Contact 5: (PE)
Shielding: M12 threaded sleeve
M23 outer thread



with LED
for digital PNP-signals 24 V DC

without LED
for analog signals or nominal voltage up to 125 V AC/DC

Ordering data		Art.-No.	Art.-No.
Distribution box 4-way		27530	27531
Distribution box 4-way		27533	
Distribution box 8-way		27535	27536
Accessories		Art.-No.	
Blind plug for empty sockets		metal, hexagon, shielded	996049
Blind plug for empty sockets		plastic	58627
Protective conductor connection set		cable fork 1.5...2.5 mm², screw, washer and lock washer	996064
V2A-base plate	4-way	for back plated EMC-protection, with fixing bolts	996065
	8-way	for back plated EMC-protection, with fixing bolts	996066
Label plates		2 strips = 10 pieces, (Murrplastik KES 20 x 8)	996067
Snap foot for DIN-rail		with fixing bolts, plastic	27905
Female connector M23		19-pole	chapter 1.6

Notes

Other versions on request.
Technical data from 1.3. onwards.

Diagnostic distributor
for sensors and actuators

- integrated current monitoring
- electronic diagnostics with ERROR-LED
- with pre-wired cable
- suitable for drag chains halogen free

MVP12 Metal DIAGNOSTIC

8-way
with pre-wired cable



Contact layout

General:

Contact 1: (+)
Contact 2: (N/C)/(S2)
Contact 3: (–)
Contact 4: (N/O)/(S1)
Contact 5: (PE)

M12 female
5-pole



with LED for PNP-signals 24 V DC		Current range 0.5 A per port for sensors and small valves		Current range 2 A per port for hydraulic valves	
Ordering data		Art.-No.		Art.-No.	
with potential separation 0 V	5.0 m	27500		27590	
PUR (UL/CSA)	10.0 m	27501		27591	
16 x 0.34/5 x 0.75 mm²	15.0 m	27502		27592	
Technical data					
Nominal voltage		24 V DC (18...30.2 V DC), potential separation 0 V for left/right side			
Current usage module		max. 35 mA			
Diagnostics output		“active high”, max. 25 mA loaded, wire “brown 2”			
M12 male					
Max. nominal current via contact 3 (0 V)		0.5 A (switch-off 0.7...0.9 A)		2 A (switch-off 2.3...2.7 A)	
Switchable capacity		max. 1470 µF			
Short-circuit protection and overload		pulse switch			
Required power supply unit		≥ 10 A		≥ 20 A	
General data					
Indicator	module	green LED: P1 and P2; red LED: ERROR for optical diagnostics			
	M12 port	yellow LED: contact 4 and 2, interference: 2 x red LED			
Temperature range		-20...+60 °C			
Protection		IP65 and IP67, when plugged and screwed down			
Description					
		All M12 plug positions are current monitored, and are switched off in case of a overload or short-circuit (self-reseting). Supply voltage remains the same. In case of a fault the DIAGNOSTIC signal drops from 24V DC to 0V. When the input to the PLC has been evaluated, and sensors/actuators are found to be defective or the installation damaged, the system or machine can be switched off or shut down immediatley. — stagnation time will be minimized — error can be localized easily through “ERROR”LED and red LEDs at even M12 socket			
Accessories					
		page 1.12.2			
Notes					
		Other versions e.g. with M23 connector on request. Technical data in chapter 1.3.			