

## Mounting attachment

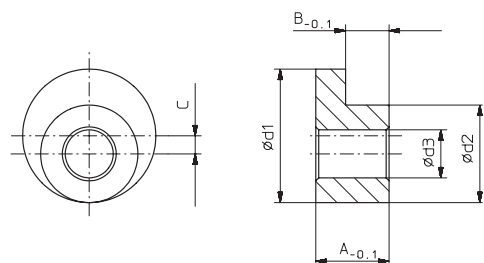


- Fastening eccentrics for rotary encoders with synchronous flange
- included screws
- Material: ACu Zn 39 Pb 3
- Surface finish: galvanized Ni

Fastening eccentrics for shaft encoders with synchronous flange

**Note:**

Use at least three fastening eccentrics to mount the encoder.



Example

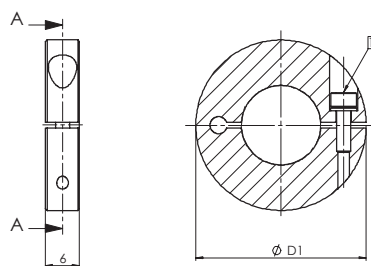


Dimensions table

d <sub>1</sub>	d <sub>2</sub>	d <sub>3</sub>	A	B	C	for encoder type	Ord.-No.
6,8	5	2,8	3,5	2,25	0,9	8.3600.1XXX.XXXX	8.0010.4200.0000
8,9	6,5	3,2	5,6	2,9	1,2	8.58XX.2XXX.XXXX	8.0010.4100.0000
14	9	5,3	10	4,9	2,5	8.9000.1XXX.XXXX	8.0010.4300.0000

**Clamping ring, stainless steel**

Stainless steel balanced clamping ring for high rotation speeds.



- 1 Screw DIN 912 A2 M2.5, maximum tightening torque 0.45 Nm.

Bestellangaben

Order-No:	for encoder with hollow shaft diameter
8.0000.4T00.0000	6,0 mm
8.0000.4U00.0000	8,0 mm
8.0000.4V00.0000	10,0 mm
8.0000.4W00.0000	12,0 mm

### Large diameter heavy duty Type A02H

Order code:

8.A02H.XXXX.XXXX

Range	A02H = Heavy Duty execution
Flange	1 = without mounting aid 2 = with short spring device 3 = <b>with long spring device</b> 4 = <b>with mounting bracket short<sup>1)</sup></b> 5 = with mounting bracket long <sup>1)</sup> not with A020H
Hollow shaft	1 = <b>∅ 42 mm</b> 2 = ∅ 38 mm 3 = ∅ 28 mm 4 = ∅ 25,4 mm (1") 5 = <b>∅ 25 mm</b> 6 = ∅ 24 mm A = <b>∅ 30 mm</b> B = ∅ 40 mm

*Prefered types are fat marked*

**Optional (on request):**  
 – special connector pin out  
 – special output signals formats

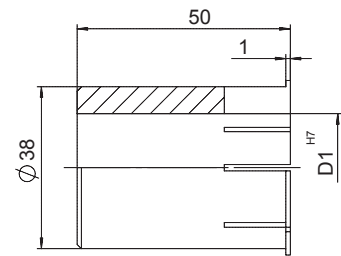
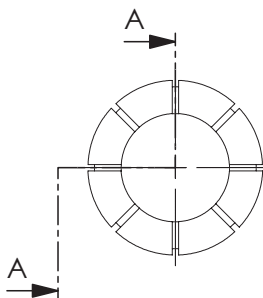
Pulse rate	(e.g. 360 pulses=> 0360)
Type of connection	1 = Cable radial (1 m PVC-cable) 2 = <b>radial 12 pin plug without mating connector</b>
Output circuit and voltage display	1 = <b>RS 422 (with inverted signal) 5 V supply voltage</b> 2 = Push-pull (without inverted signal) 10 ... 30 V supply voltage 3 = <b>Push-pull (with inverted signal) 10 ... 30 V supply voltage</b> 4 = RS 422 (with inverted signal) 10 ... 30 V supply voltage 5 = Push pull (with inverted signal) 5 ... 30 V supply voltage 8 = SIN/COS 1 Vpp (with Invertierungen) 5 V supply voltage 9 = SIN/COS 1 Vpp (with inverted signal) 10 .. 30 V supply voltage A = Line driver 7272 5 ... 30 V supply voltage

### Accessories

#### Isolation insert



Diameter: D1	Order-no.:
12.7 mm (1/2")	8.0010.4013.0000
15.875 mm	8.0010.4070.0000
18 mm	8.0010.4080.0000
19.05 mm (3/4")	8.0010.4090.0000
20 mm	8.0010.4011.0000
25 mm	8.0010.4012.0000
25.4 mm	8.0010.4050.0000
31.75 mm (1 1/4")	8.0010.4060.0000



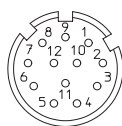
Isolation inserts prevent currents from passing through the encoder bearings. These currents can occur when using inverter controlled three-phase or AC vector motors and considerably shorten the service life of the encoder bearings.

For more details please call our Technical Hotline (+49 7720 3903 92) or send us an e-mail (info@kuebler.com)

### Accessories

Corresponding mating connector to Type of connection 3 or 5, 12 pin: Art.-No.. 8.0000.5012.0000 pin assignment ccw  
 Corresponding mating connector with cable pre-assembled: Art.- No. 8.0000.6101.XXXX (XXXX = length [m])  
 Set includes Connector typ 8.0000.5012.0000 and cable typ 8.0000.6100.XXXX (Cable PUR 10 x 0,14 mm<sup>2</sup> + 2 x 0,5 mm<sup>2</sup>)

#### PIN allocation:



#### Dimensions:

