



Starter kit accessories



The starter kit accessories from Dimetix AG helps to familiarize with DLS-B Distance-Laser-Sensors. The Kit includes all necessary Components to operate a DLS-B Sensor.

Content

- 1 RS232 connection cable to connect the DLS-B Sensor with a PC via serial interface RS232 (500200)
- 1 Power supply with worldwide application possible due to wide range input 100 to 240VAC and primary plug system.
- 1 CD-Rom with DIMETIX utility software
- 1 Manual for DLS-B

!!! DLS-B 15/30 must be ordered separately !!!

System requirements

- PC with Windows 98 or newer
- Serial interface RS232
- In case of USB interface on PC only, converters are available in the Market (e.g. Maxxtro USB to serial converter UC-232A)

Order information

Item number	Description	Packaging unit
500590	Starter kit accessories Consisting of: - RS232 cable (500200) - Power Supply IN: 100 ... 240 VAC, 0.6A Out: 24 VDC, 0.75 A !!! only for DLS devices without heating option !!! - DLS Utility Software - DLS-B Manual !!! DLS-B 15/30 must be ordered separately !!!	1 piece



Certificate of calibration for DLS devices

Dimetix AG-Degersheimerstr.14- CH-9100 Herisau - SWITZERLAND DIMETIX	
Certificate Of Calibration	
Certificate No: 3202 Manufacturer: Dimetix AG Type: DLS-A 15 Description: DLS-A 15 Distance Laser Sensor Model No: 500502 Serial No: 44820102 Date of Calibration: 07-Januar-2005 Humidity: 4.0 ± 0.7 0% RH Temperature: 20.4 ± 0.1 °C	
At the completion of the calibration, measured values were in specification stated in the technical reference manual.	
Calibration Equipment Used Model Number: D2002 Serial Number: 181144 Model Description: Laser Distance Sensor Calibration Date: 15.Januar.2005	
Herisau, 10 März 2005 _____ Andreas Zünd Quality Manager	

For the certificate of calibration of a DLS devices we gauge distances from 0.2 m to 16 m. For that, a interferometer ZLM 800 with an accuracy of 80nm is used as the reference measuring device. This device is traced to national and international standards.

Certificate of calibration for a new DLS device

By ordering new DLS sensors you may order at the same time to each DLS-device a certificate of calibration.

Certificate of calibration for a used DLS device – re-calibration

You may return already used DLS devices to Dimetix AG for re-calibration. This units go through the whole quality process: Device cleaning, climatic exposure test cabinet, function test and calibration. Following to this the certificate of calibration will be created. Any repair are not included.

Order information

Item number	Description	Packaging unit
500001	Certificate of calibration for a new DLS device	1 piece
500002	Certificate of calibration for a used DLS device – re-calibration	1 piece

28. Jul. 2006 / Subject to change without notice

500001_002 Certificate of Calibration_EN_V2.odt



Viewfinder



The telescopic viewfinder can be used for easy alignment of the DLS-B(H) for long distances. Clip the support onto the case of the DLS-B(H)

Order information

Item number	Description	Packaging unit
500101	Viewfinder with DLS-B(H) support	1 piece

28. Jul. 2006 / Subject to change without notice

500101_Viewfinder_EN_V2.odt

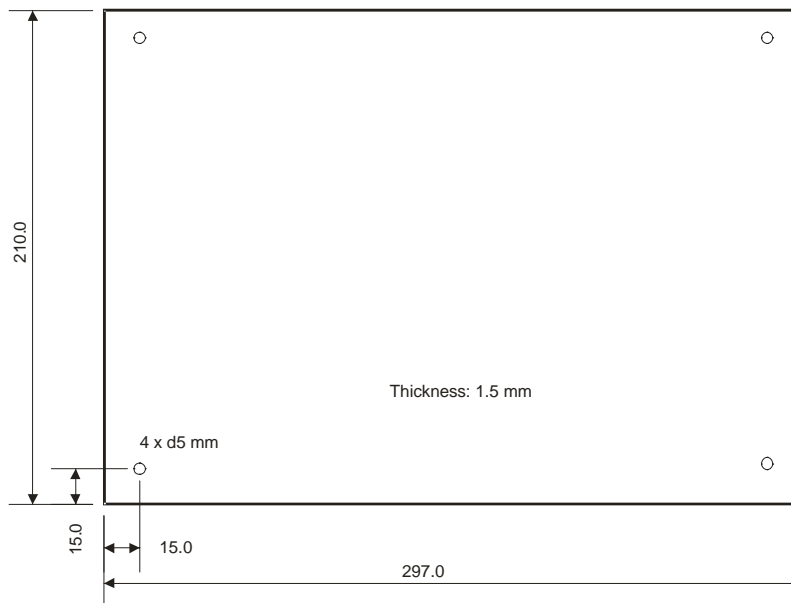


Target plate



The target plate provides a defined measuring target.

Color orange reflective, for measuring longer distances. The reflective surface sends more light back to the DLS-B(H). These target plates work over distances from 0.05 to 500m.



Order information

Item number	Description	Packaging unit
500113	Aluminium target plate large 210 x 297 mm (orange)	1 piece

28. Jul. 2006 / Subject to change without notice

500113_target plate_EN_V2.odt



Laser glasses



The red lens glasses improve visibility of the laser dot under bright environment conditions. They can be used for distances up to 10-20m

Order information

Item number	Description	Packaging unit
500120	Laser glasses	1 piece

28. Jul. 2006 / Subject to change without notice

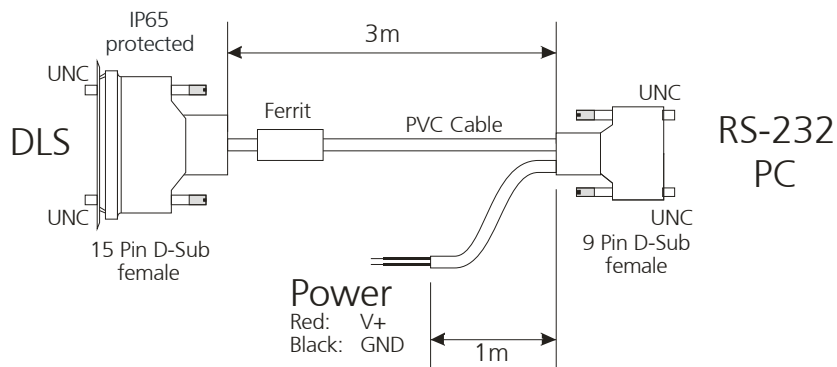
500120_Laser glasses_EN_V2.odt



RS232 Connection Cable



Cable for the connection of a DLS-A Distance Laser Sensor to a PC and a power supply (configuration cable).



Remark: Do not use for devices with the heating option (DLS-BH).

Order information

Item number	Description	Packaging unit
500200	RS232 Connection cable 3m with 15 pin connector IP65 and 9 pin connector	1 piece

28. Jul. 2006 / Subject to change without notice

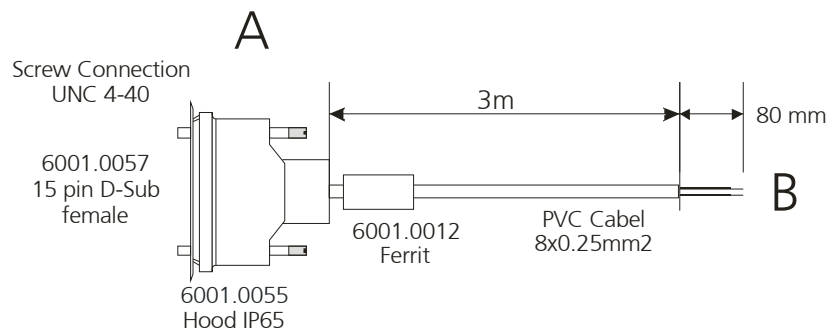
500200_RS232 Connection cable_EN_V2.odt



AO/DO Connection cable



Cable for the connection of a DLS-A Distance Laser Sensor using for the the automatic mode.



A		B	
14	Gnd	white	Gnd
8	V+	brown	V+
9	DO1	green	DO1
10	DO2	yellow	DO2
11	DOE	grey	DOE
12	AGnd	pink	AGnd
13	AO	blue	AO

Remark: Do not use for devices with the heating option (DLS-BH).

Order information

Item number	Description	Packaging unit
500202	AO/DO Connection cable 3m with 15 pin connector IP65	1 piece

28. Jul. 2006 / Subject to change without notice

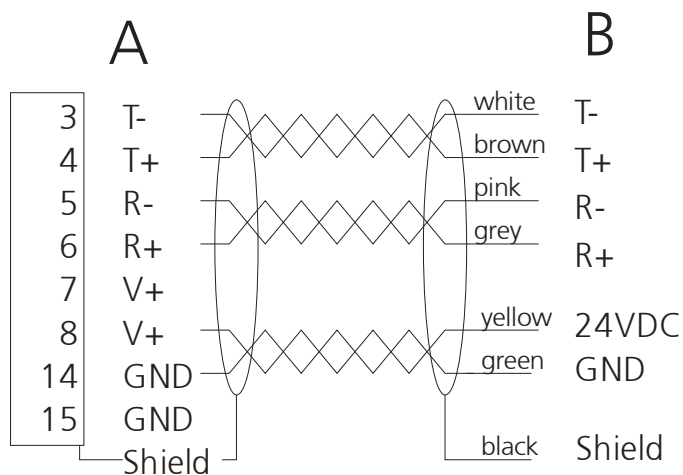
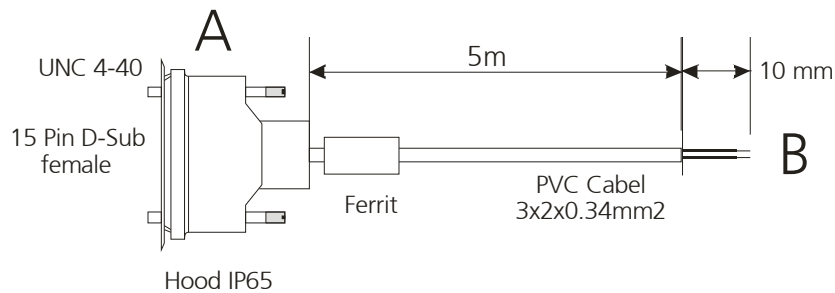
500202_AO_DO Connection cable_EN_V2.odt



RS422 Connection cable



Cable for the connection of a DLS Distance Laser Sensor to a junction box and a power supply.



Remark: Do not use for devices with the heating option (DLS-BH).

Order information

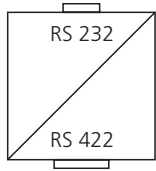
Item number	Description	Packaging unit
500203	RS422 Connection cable 5m with 15 pin connector IP65	1 piece
	RS422 Connection cable – special length with 15 pin connector IP65	1 piece

28. Jul. 2006 / Subject to change without notice

500203_RS422 Connection cable_EN_V2.odt

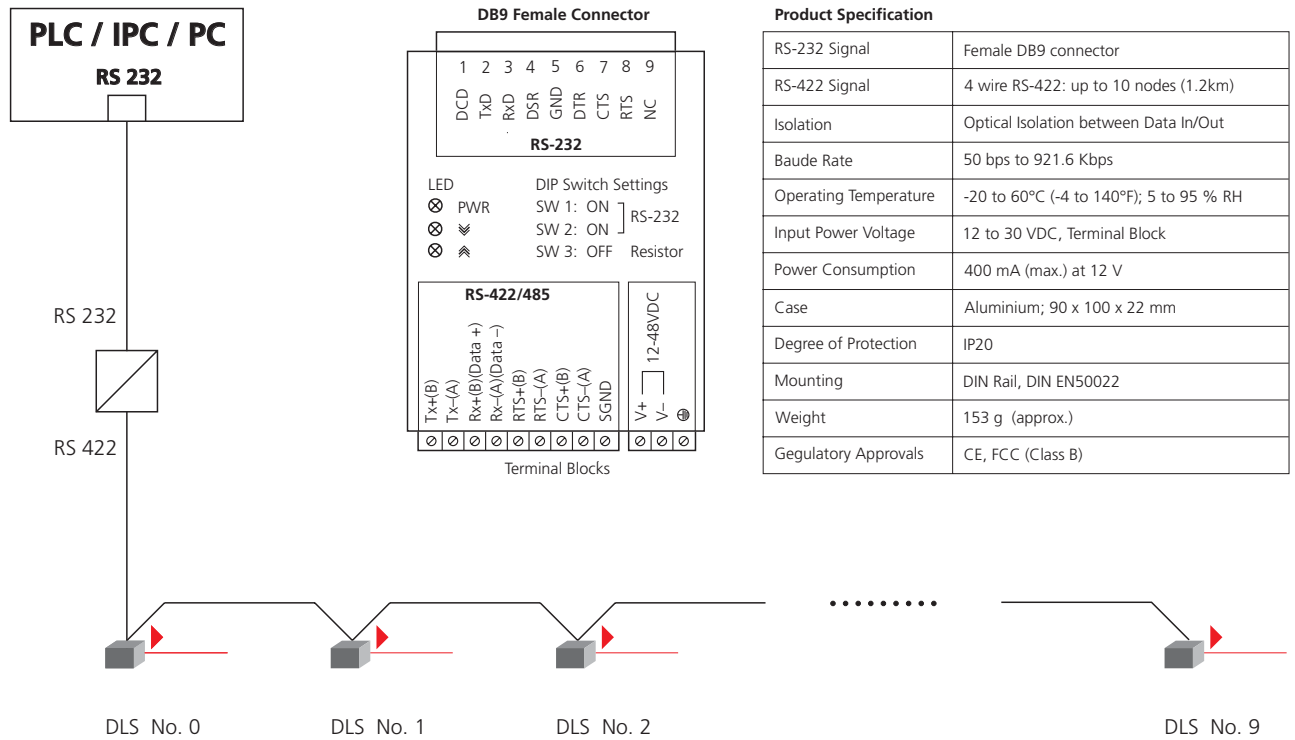


RS-232 to RS-422 Converter



With the RS-232 / RS-422 Converter it's possible to control the DLS sensors through a industrial interface. For that it's possible to control DLS which are placed far away (up to 1200 m).

The RS-232 to RS-422 Converter is a IP20 module and is mountable on a DIN rail 35 mm. Furthermore, it's possible to control up to 10 DLS Laser Distance Sensors.



Order information

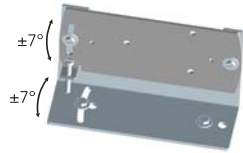
Item number	Description	Packaging unit
500210	RS-232 to RS-422 Converter IP20 module, mountable on a DIN rails 35 mm	1 piece

Oct. 23, 2008 / Subject to change without notice

500210_RS-232 to RS-422 Converter_EN_V2.odt



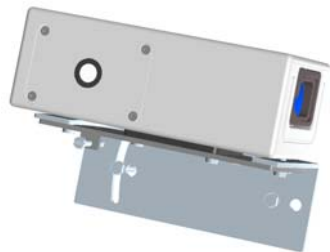
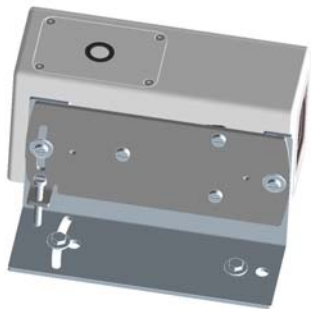
Alignment jig DLS



The alignment jig makes it easy to adjust the Laser Distance Sensors in two directions. It's made of stainless steel and usable in almost any environment.

The alignment jig is recommended for distances up to about 50 m.

Applied on DLS



Order information

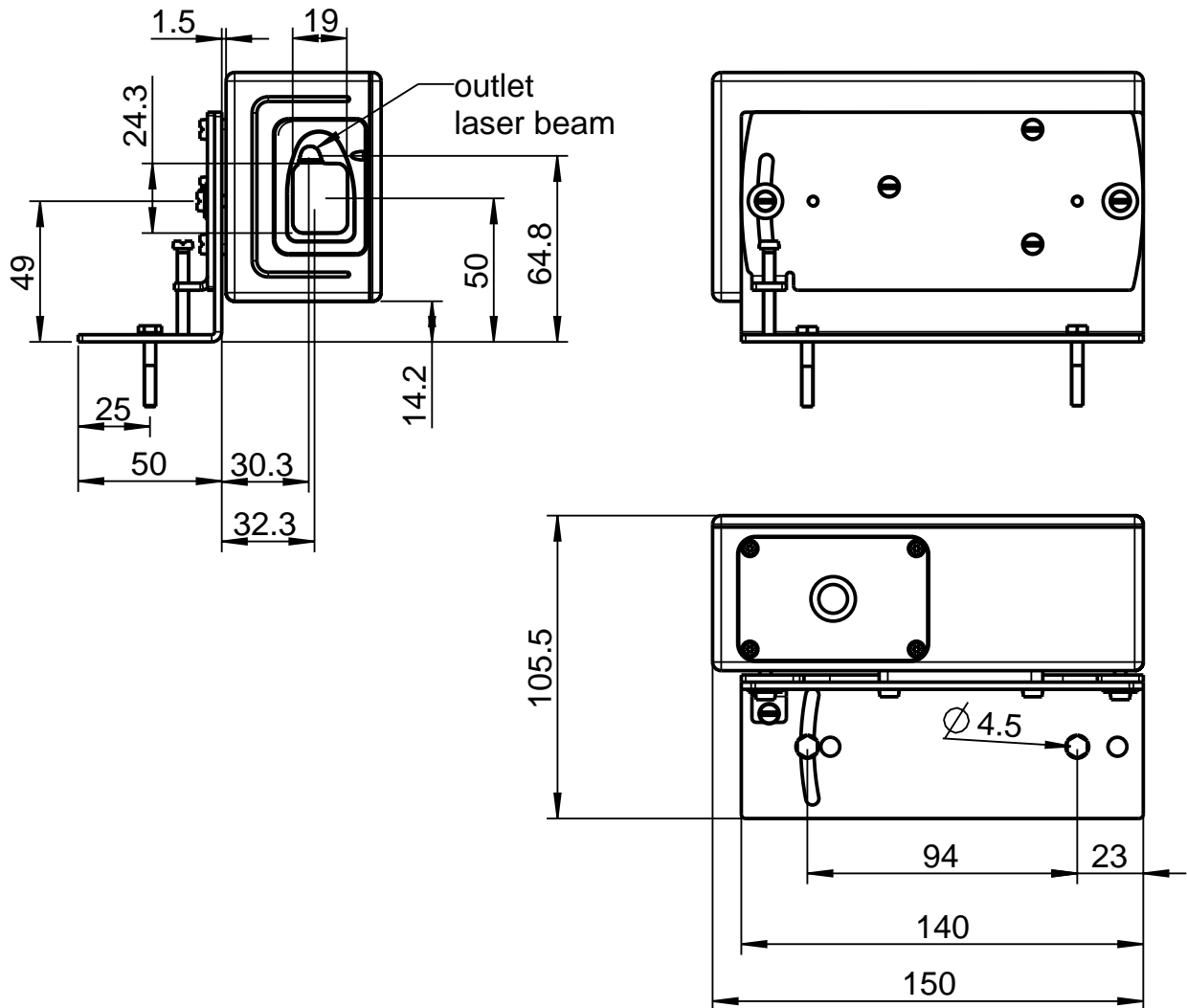
Item number	Description	Packaging unit
500213	Alignment jig DLS Adjusting angle: +/-7 ° in two directions Material: Stainless steel (V2A)	1 piece

Jan 22, 2009 / Subject to change without notice

500213_Alignment jig DLS_EN_V3



Dimensions of the DLS-B



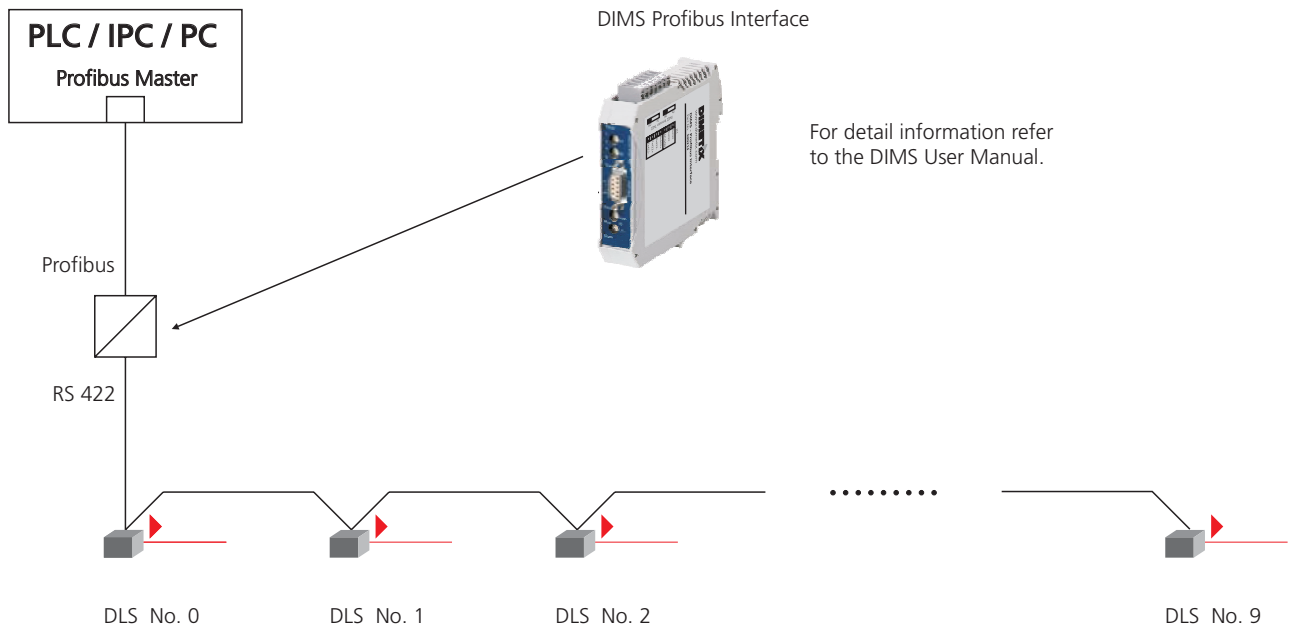


DIMS Profibus Interface



With the DIMS Profibus Interface it's possible to connect the DLS sensors directly to a Profibus-Master.

The DIMS Profibus interface is a IP20 Profibus/RS422 converter and is mountable on a DIN rail 35 mm. It supports Baudrate up to 12 Mbaud. Furthermore, it's possible to control up to 10 DLS Laser Distance Sensors which represents a cost efficient solution.



Order information

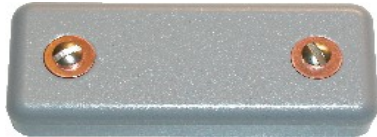
Item number	Description	Packaging unit
500214	DIMS Profibus Interface Controlling of up to 10 DLS with Profibus-Master 12MBaud Profibus/RS422 converter IP20, mountable on a DIN rail 35 mm	1 piece

Oct. 23, 2008 / Subject to change without notice

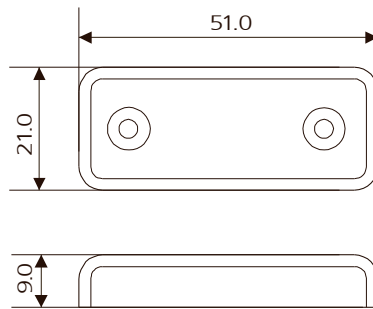
500214_DIMS_Profibus_interface_EN_V2.odt



Cover IP65 for D-Sub connector



If the DLS is connected by a cable using the cable gland, the 15 pin D-Sub connector is not used. This connector cover protects the unused D-Sub connector.



Order information

Item number	Description	Packaging unit
500251	Cover IP65 for D-Sub connector	1 piece

28. Jul. 2006 / Subject to change without notice

500251_Connector cover IP65_EN_V2.odt

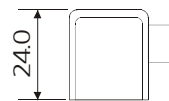
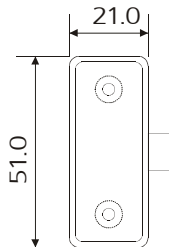


Connector with 90° cable exit IP65



This connector helps to integrate the DLS into machines. It fits the back end of the DLS perfectly and can be used to connect the necessary wires.

The maximum cable diameter which might be connected is 5 mm.



Order information

Item number	Description	Packaging unit
500253	Connector with 90° cable exit IP65 with D-Sub Connector / cable exit IP65, maximum cable diameter is 5 mm	1 piece

5. Aug. 2008 / Subject to change without notice

500253_Connector with 90° cable exit IP65_EN_V3.odt



Connector case IP65 for 15 pin D-Sub



This connector helps to integrate the DLS into machines. It fits the back end of the DLS perfectly and can be used to connect the necessary wires.

The cable diameter range which might be connected is 6 mm to 10 mm.

Content

- Connector case IP65
- 15 pin D-Sub connector
- seal ring

Order information

Item number	Description	Packaging unit
500290	Connector case IP65 for 15 pin D-Sub with D-Sub Connector, cable diameter range is 6 mm to 10 mm	1 piece

5. Aug. 2008 / Subject to change without notice

500290_Connector case IP65 for 15 pin D-Sub_EN_V3.odt



Ferrite for cable



Ferrites are used to reduce the electromagnetic emission.

Order information

Item number	Description	Packaging unit
500291	Ferrite for cable diameter 6.5mm	1 piece
500292	Ferrite for cable diameter 10mm	1 piece
500293	Ferrite for cable diameter 13mm	1 piece

28. Jul. 2006 / Subject to change without notice

500291_292_293_Ferrite_EN_V2.odt